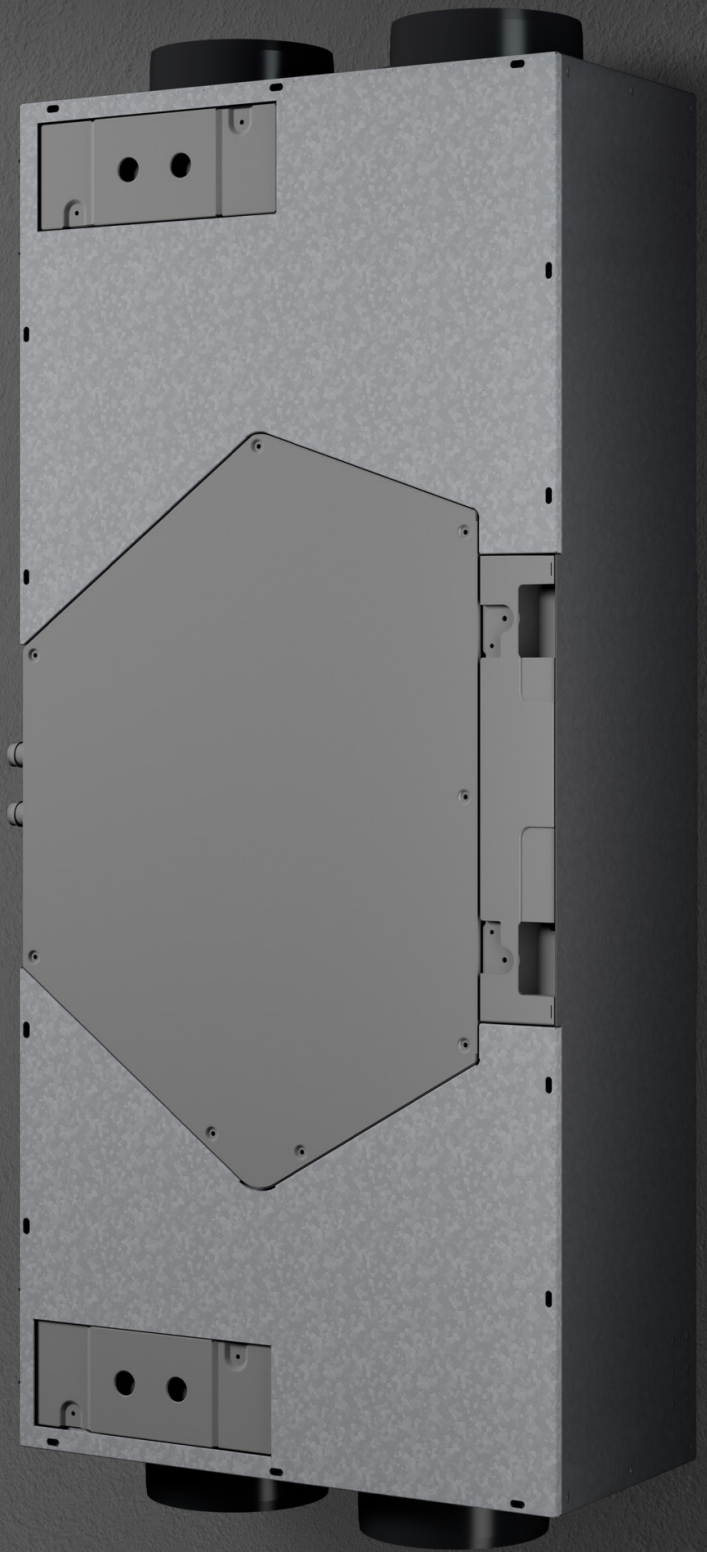


STIEBEL ELTRON

VRC-C 450

A high-performance, space-saving ventilation unit delivering quiet, energy-efficient heat recovery for homes and commercial spaces.



VRC-C 450 Trend

HEAT RECOVERY VENTILATION

Efficient, quiet, and smart ventilation designed for modern living spaces

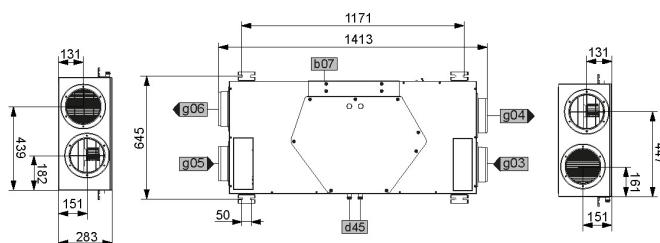
The STIEBEL ELTRON VRC-C 450 provides high-efficiency heat recovery ventilation in a discrete, ceiling mounted package. Ideal for medium to large residential or small commercial properties, where space optimization is critical, it features the largest capacity available in a ceiling mounted unit yet. The VRC-C 450 is designed for your convenience, offering extensive functions, including adjustable weekly time programs and CO₂ / indoor air quality monitoring. Whisper quiet operation, seamless WiFi and MyStiebel app connectivity via the optional WLAN module and easy filter access make the VRC-C 450 an essential piece of kit for high performance homes and providing and maintaining exceptional indoor air quality.



Product features

- › Up to 90% heat recovery efficiency
- › Compact and discrete ceiling installation
- › Convenient operation with WiFi & My Stiebel App functionality via WLAN module
- › Easy to clean and replace filters, ensuring optimal hygiene
- › CO² & indoor air quality monitoring
- › Flow rate up to 450 m³/h
- › Whisper quiet Operation

Dimensions



MyStiebel App



Stiebel Store



Type	VRC-C 450 Trend	
Article no.	205767	
Max. heat recovery	%	90
Air flow volume	m³/h	100 - 450
Available ext. pressure at max flow	Pa	200
Sound power level (EN 13141-7) @ 50Pa external	dB(A)	45
IP rating	IP22	
Electrical Connection	1/N/PE ~ 230 V 50 Hz	
Filter class	ePM1 ≥50 % (F7) ISO Coarse ≥65 % (G4), (E12 optional)	
Height	mm	280
Width	mm	590
Length	mm	1413
Air duct connection	mm	DN180
Condensate drain	mm	32
Weight	kg	48
Type of installation	Ceiling	

STIEBEL ELTRON is committed to our policy of continual improvement, some features may have subsequently been changed or even removed. Our advisors will be happy to consult with you regarding the currently applicable equipment features. The images used in this data sheet are for reference only.